



Pushing Performance

HARTING, Inc.
of
North America

Han-Yellock®

People | Power | Partnership

Spring 2010

A new member of the Han® family...!





Pushing Performance

HARTING, Inc.
of
North America

Han-Yellock®

People | Power | Partnership

Spring 2010

Derived Customer Requirements

- **Fast and easy assembly of the cable side**
- **Fast and easy installation of the cabinet side**
- **Quick connect and disconnect**
- **Locking option**
- **Space saving**
- **Mechanically robust**
- **Easy to modify**
- **Option for labels & coding**
- **Reduced total cost of ownership**



Pushing Performance

HARTING, Inc.
of
North America

Han-Yellock®

People | Power | Partnership

Spring 2010

Han-Yellock®



People | Power | Partnership



Pushing Performance

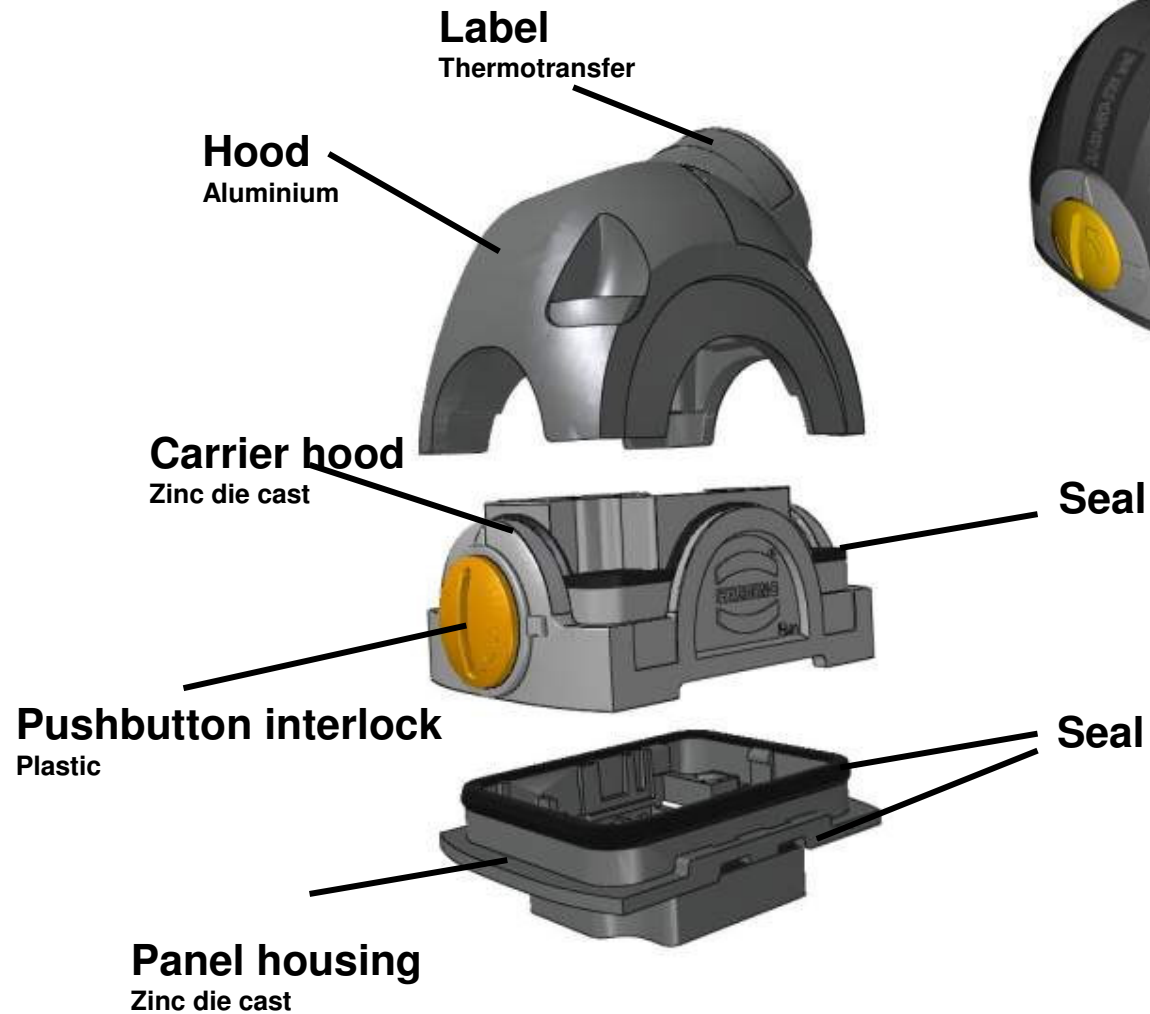
HARTING, Inc.
of
North America

Han-Yellock®

People | Power | Partnership

Spring 2010

Concept overview





Pushing Performance

HARTING, Inc.
of
North America

Han-Yellock®

People | Power | Partnership

Spring 2010

Mating and unmating

Locking/ Unlocking



open



closed



safety belt function

- Match indicator
- Push to connect
- Press button release



Pushing Performance

HARTING, Inc.
of
North America

Han-Yellock®

People | Power | Partnership

Spring 2010

Robust Design



- Internal locking mechanism
- Finger protected contacts
- Hood shroud to protect contacts and inserts



Pushing Performance

HARTING, Inc.
of
North America

Han-Yellock®

People | Power | Partnership

Spring 2010

Locking function



open



close

- Lock the button by turning 90°





Pushing Performance

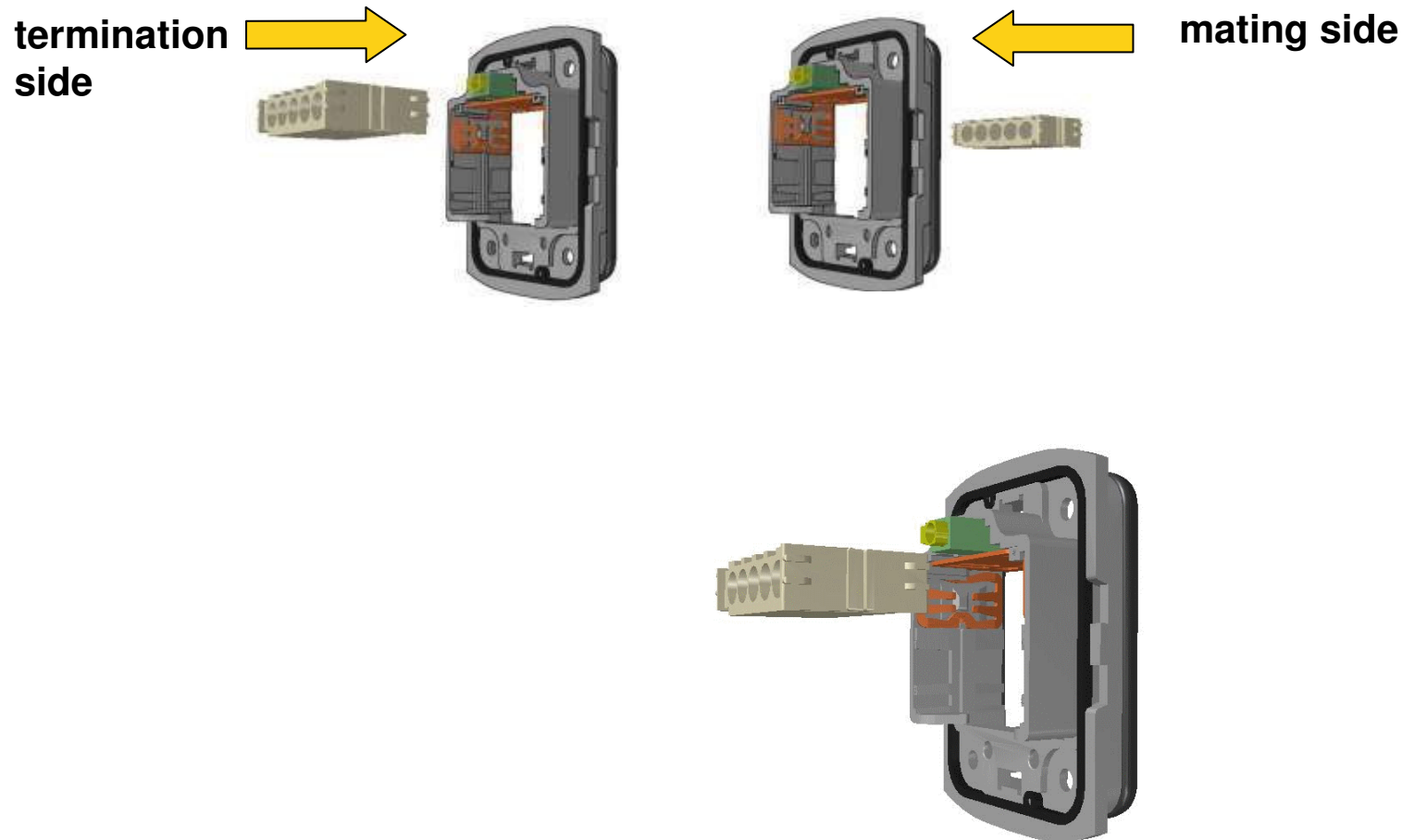
HARTING, Inc.
of
North America

Han-Yellock®

People | Power | Partnership

Spring 2010

Assembly Process



- Flexible assembly from termination and mating side



Pushing Performance

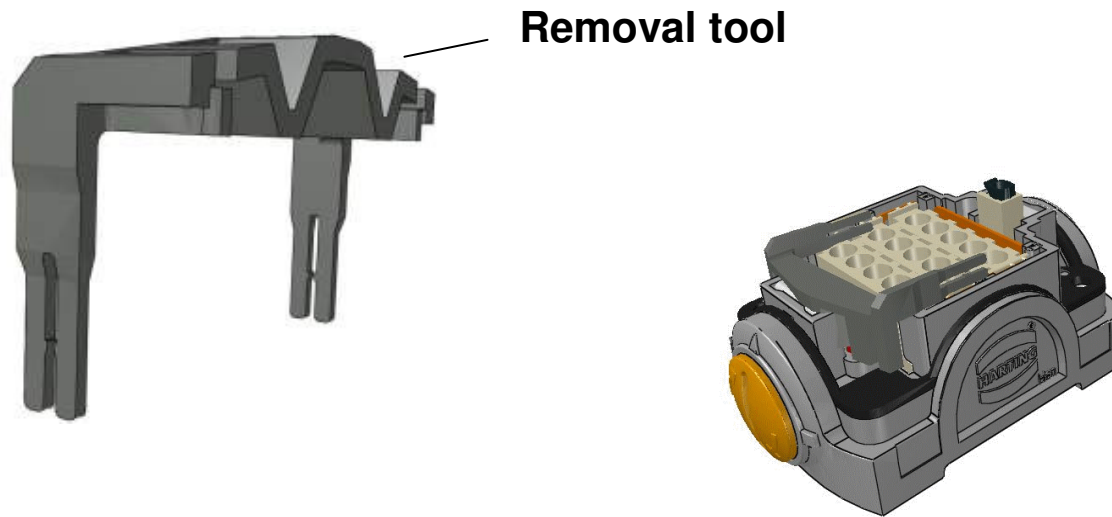
HARTING, Inc.
of
North America

Han-Yellock®

People | Power | Partnership

Spring 2010

Removal Process



- Removal tool can be placed inside the hood
- Yellock-module removal from mating and termination side





Pushing Performance

HARTING, Inc.
of
North America

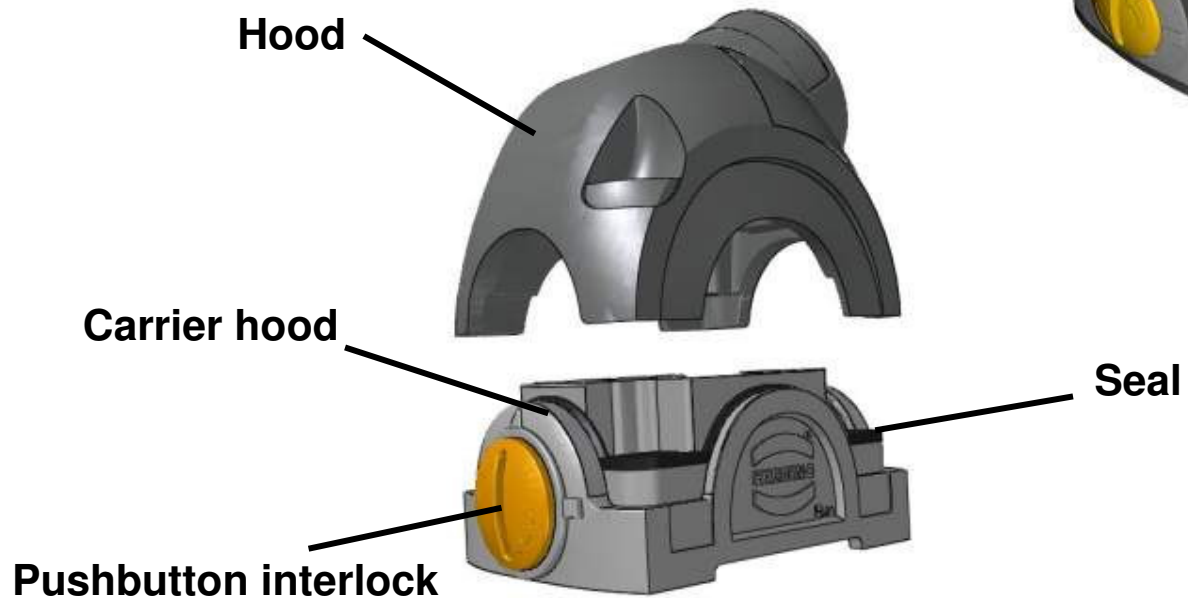
Han-Yellock®

People | Power | Partnership

Spring 2010

Cable side – two piece design

Easy Assembly





Pushing Performance

HARTING, Inc.
of
North America

Han-Yellock®

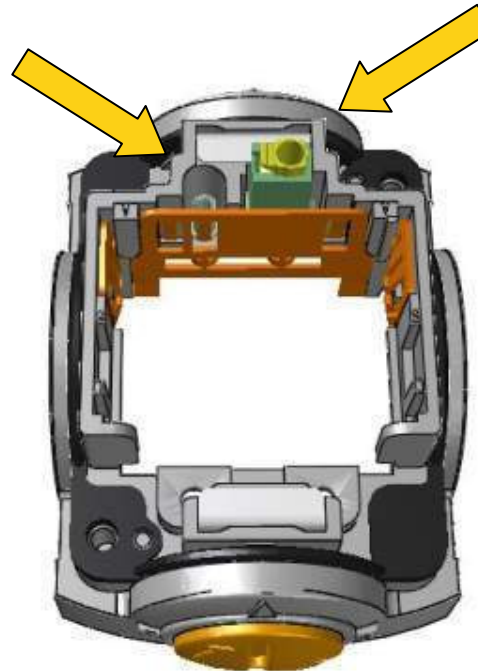
People | Power | Partnership

Spring 2010

Protective Earth

PE crimp
 $\leq 4\text{mm}^2$

PE Quick Lock
 $0,5\text{mm}^2$ to $2,5\text{mm}^2$



- PE crimp contact equal to power contact
- PE is part of the hood/housing





Pushing Performance

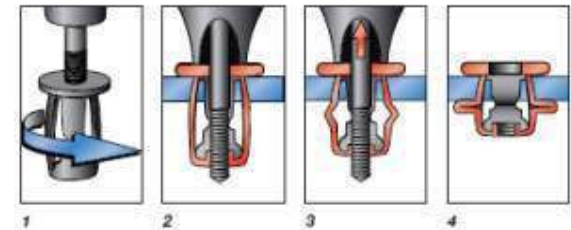
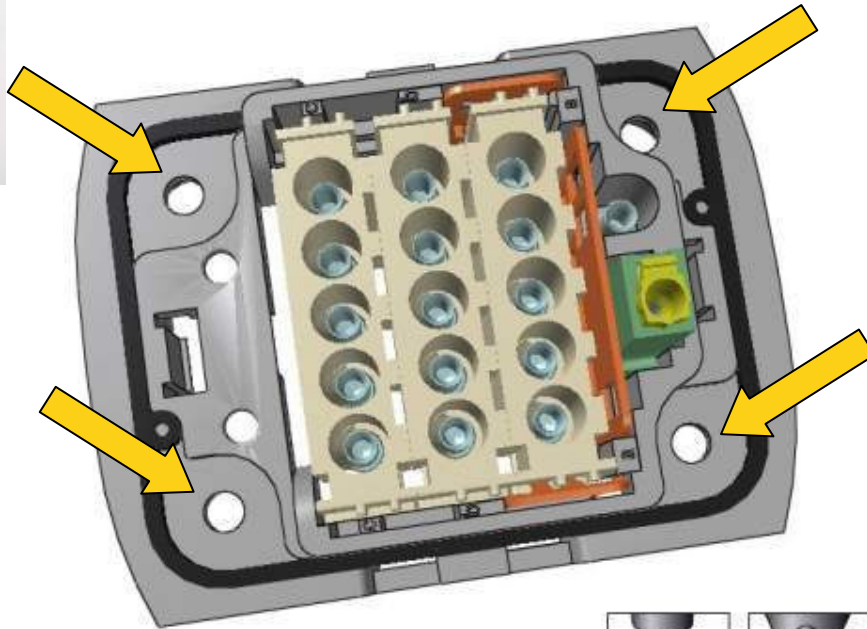
HARTING, Inc.
of
North America

Han-Yellock®

People | Power | Partnership

Spring 2010

Panel fixing



- Fixing screws inside sealed area
- IP 67 protection by using standard screws
- Possibility for using Jack Nut fasteners



Pushing Performance

HARTING, Inc.
of
North America

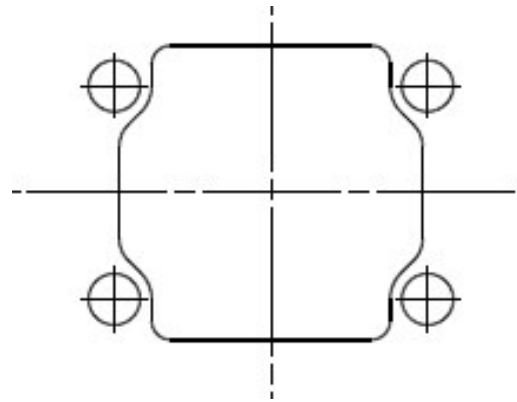
Han-Yellock®

People | Power | Partnership

Spring 2010

Panel cut out

Cut out with smooth edges



- HARTING will offer a panel cut out tool
- Adapter plates for circular cut outs possible



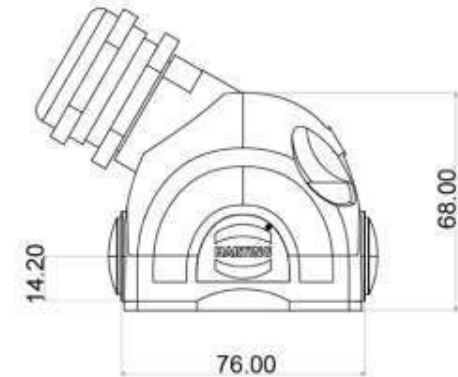
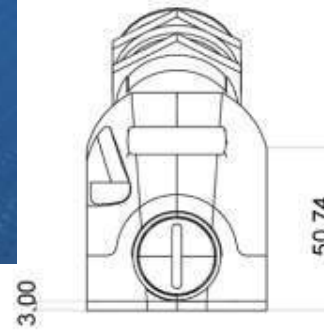
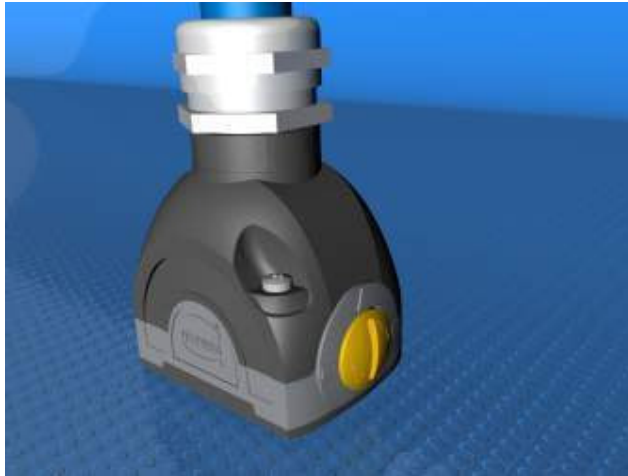


Pushing Performance

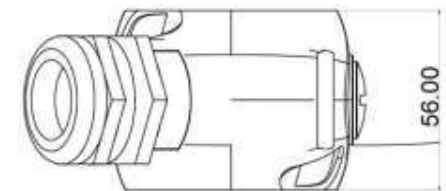
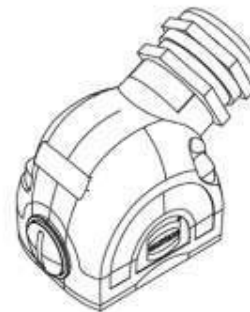
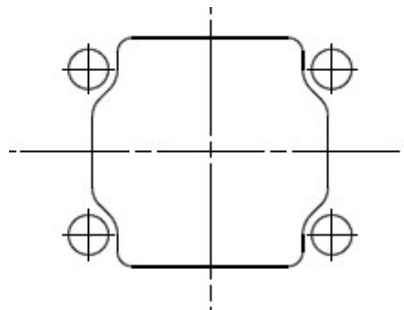
Han-Yellock[®] 30

HARTING, Inc.
of
North America

Han-Yellock[®]



Panel cut out



People | Power | Partnership

Spring 2010

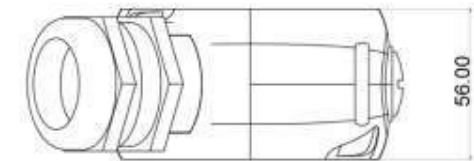
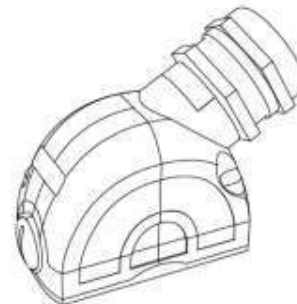
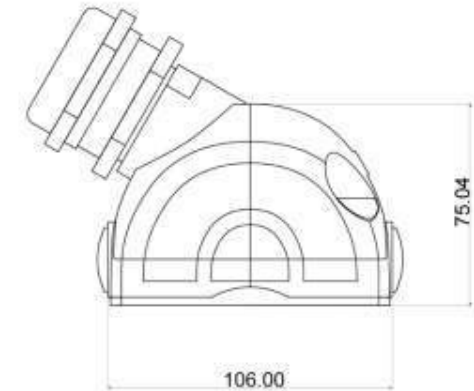
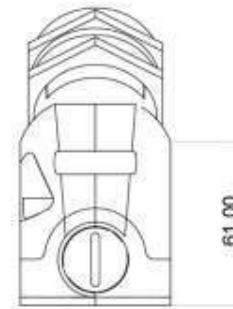
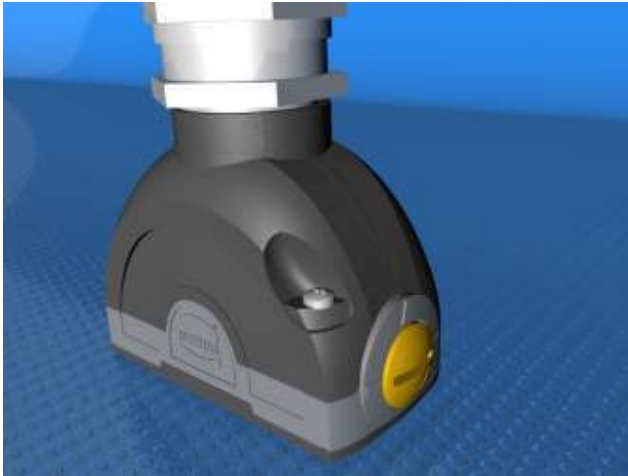


Pushing Performance

Han-Yellock[®] 60

HARTING, Inc.
of
North America

Han-Yellock[®]



People | Power | Partnership

Spring 2010



Pushing Performance

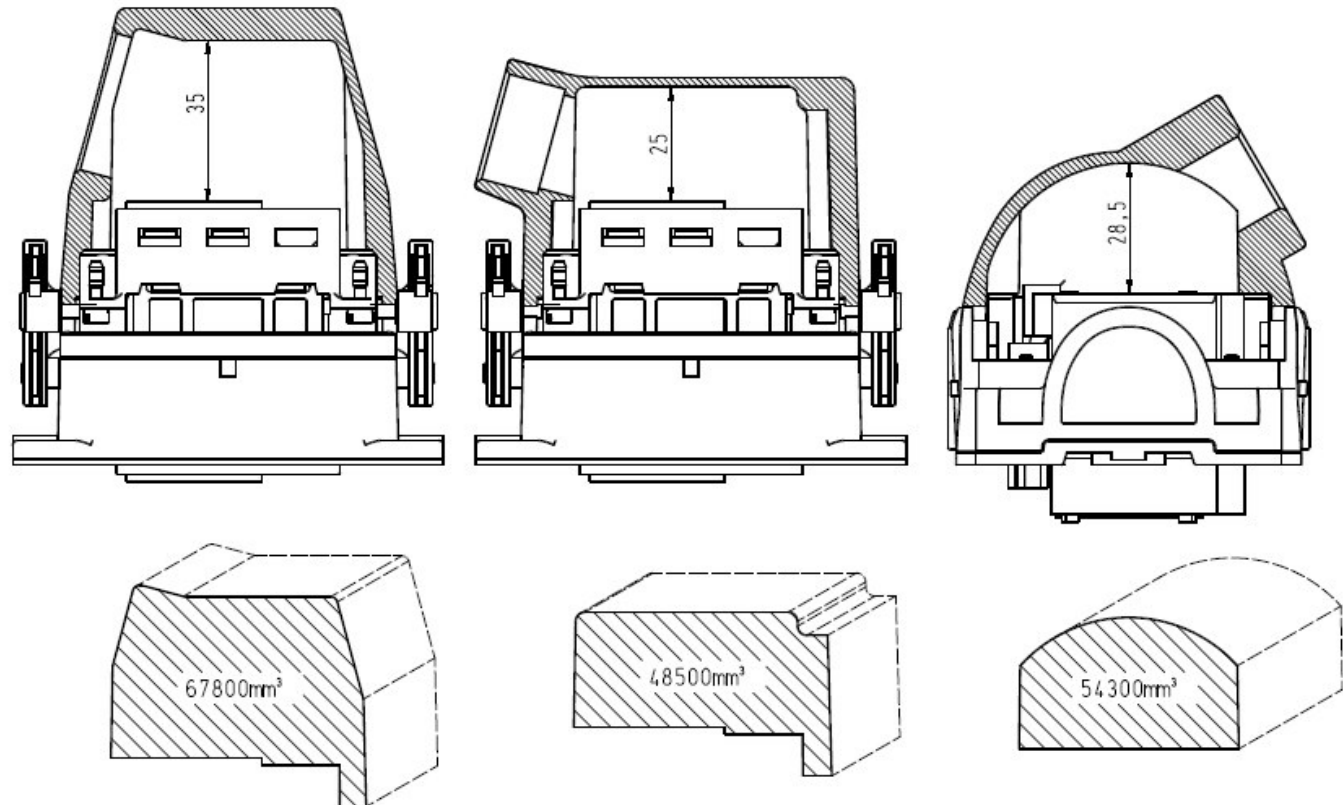
HARTING, Inc.
of
North America

Han-Yellock®

People | Power | Partnership

Spring 2010

Size Comparison



- Smaller height than low construction hoods but more wiring volume



Pushing Performance

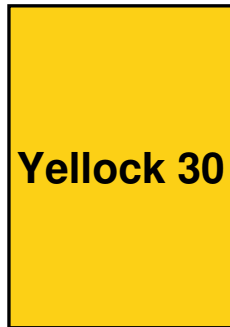
HARTING, Inc.
of
North America

Han-Yellock®

People | Power | Partnership

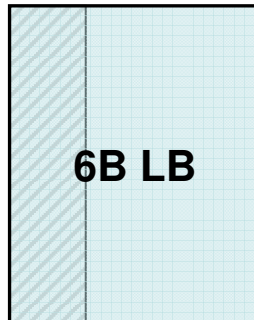
Spring 2010

Size Comparison



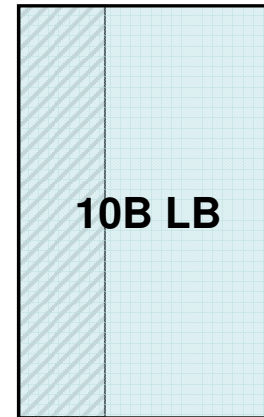
80x60

15 Pin Y Module crimp
15 Pin Y Module QL
25 Pin Monoblock



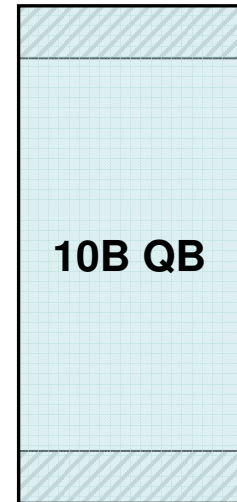
80x66

6 Pin Han E screw
10 Pin Han EE
20 Pin EEE Modul



93x66

10 Pin Han E screw
18 Pin Han EE
28 Pin EEE Modul+ EE Modul



117x60





Pushing Performance

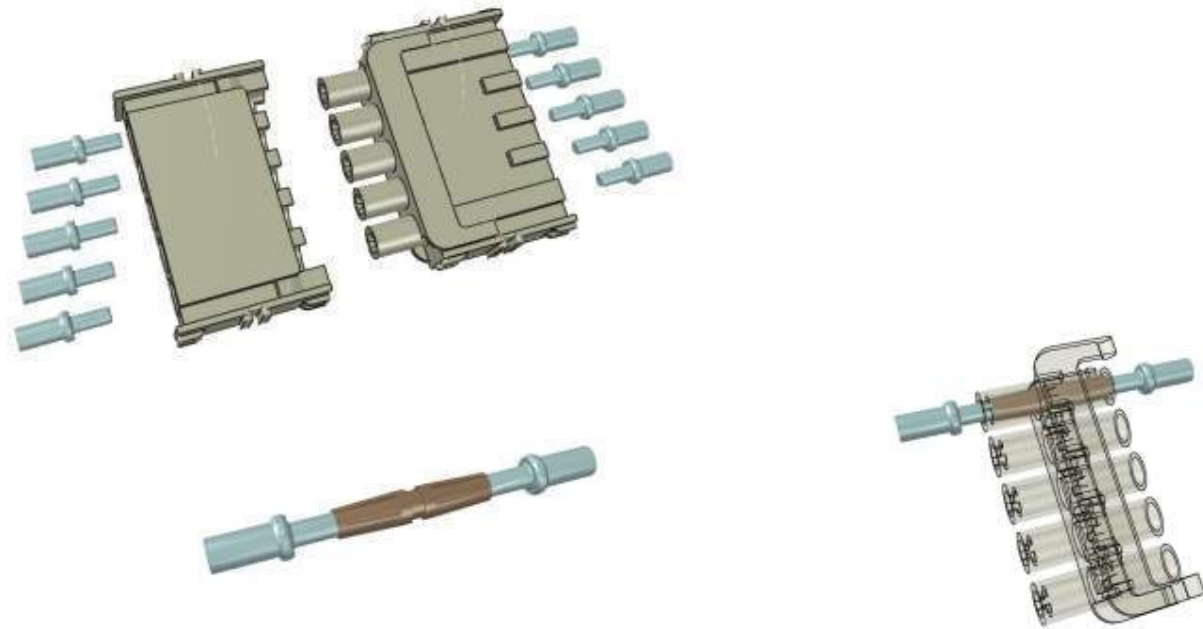
HARTING, Inc.
of
North America

Han-Yellock®

People | Power | Partnership

Spring 2010

Contacts for Yellock modules



- Yellock-modules only need male contacts
- Customerwise female contacts do not appear
- Crimp ferrule in Han E design



Pushing Performance

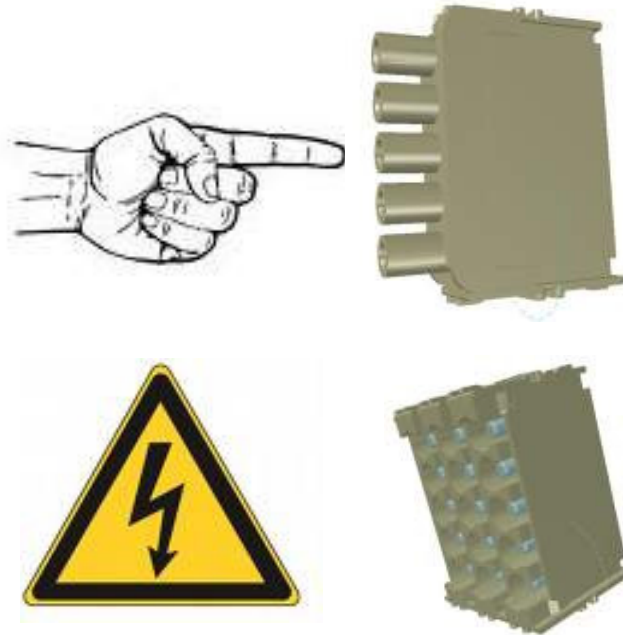
HARTING, Inc.
of
North America

Han-Yellock®

People | Power | Partnership

Spring 2010

Finger Protection



- **Fingerproof design for Yellock modules (male and female side)**



Pushing Performance

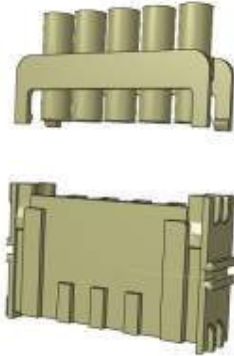
HARTING, Inc.
of
North America

Han-Yellock®

People | Power | Partnership

Spring 2010

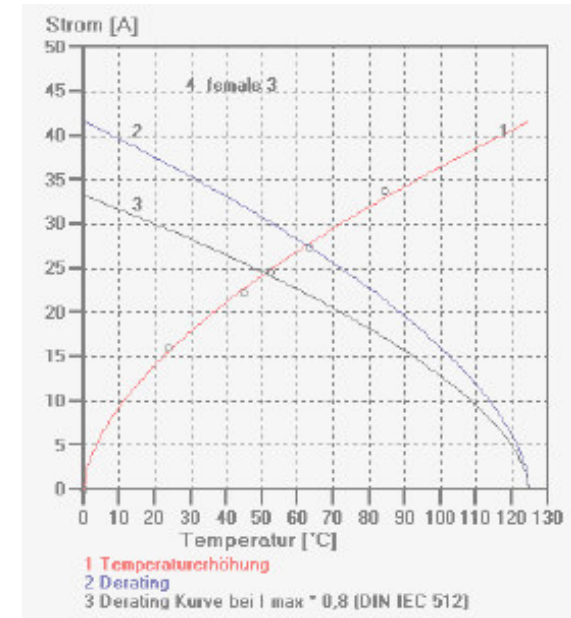
Han-Yellock® Modules



Working voltage 500V

Working current 20A

Plastic PC



- Crimp termination
 - Han E crimping tools can be used
 - Up to 4mm²
- Han-Quick Lock termination
 - 0,5mm² to 2,5mm²



Han-Quick Lock®



Pushing Performance

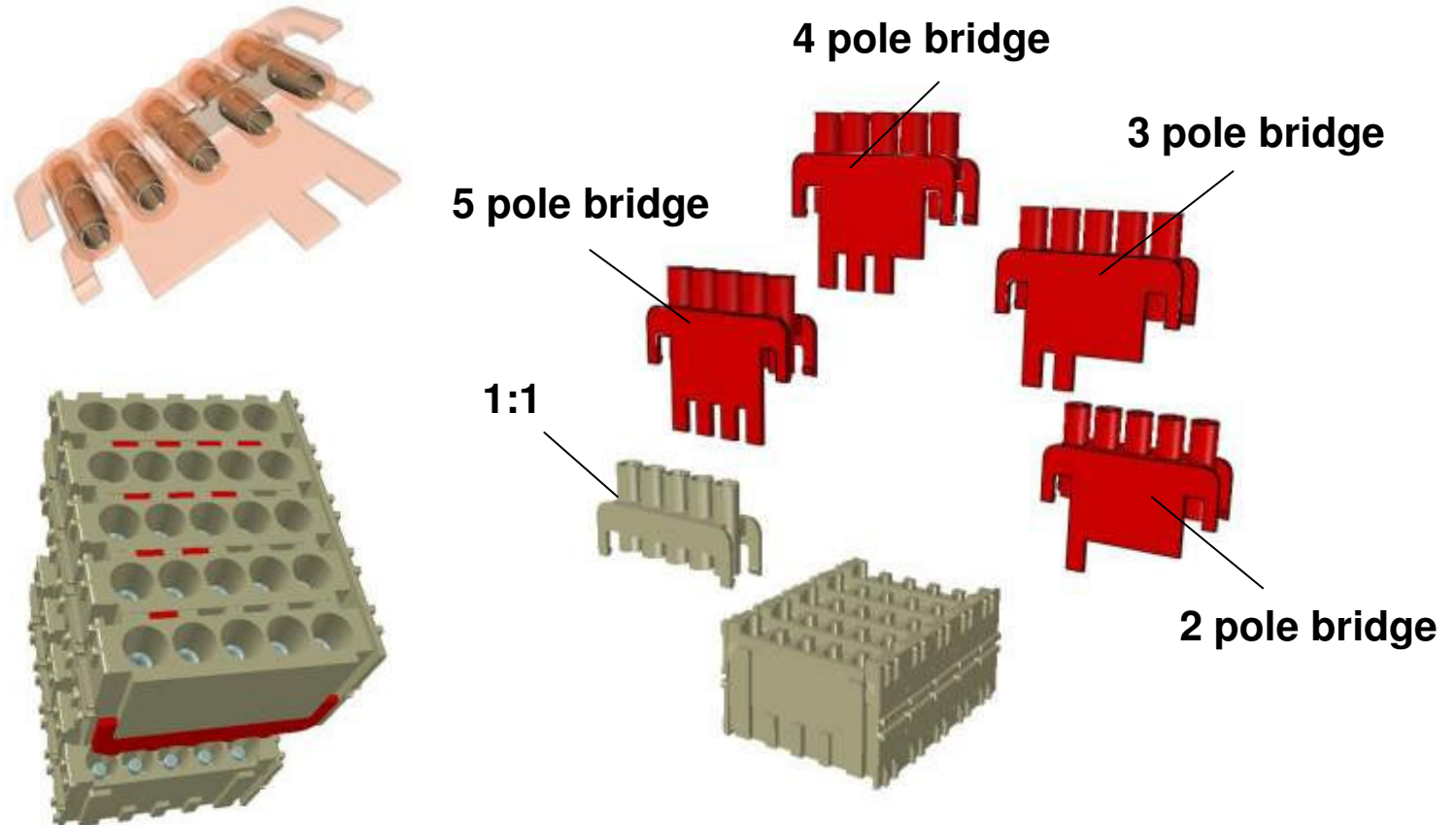
HARTING, Inc.
of
North America

Han-Yellock®

People | Power | Partnership

Spring 2010

Contact Multiplier



- Multiplier in red colour
- Front- and backside bridge marking





Pushing Performance

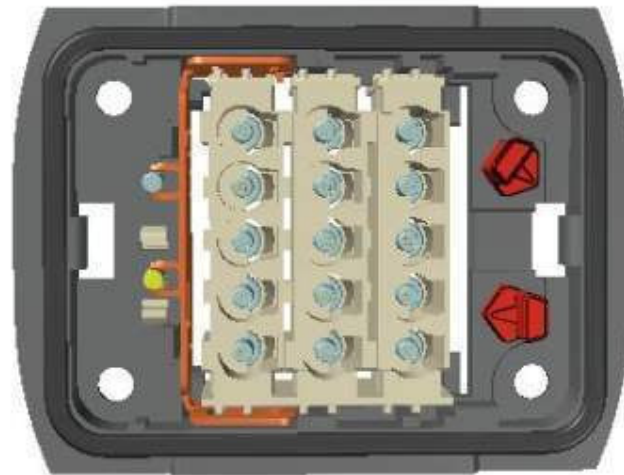
HARTING, Inc.
of
North America

Han-Yellock®

People | Power | Partnership

Spring 2010

Coding options



- Plastic coding pins for hood and housing
- 25 coding possibilities
- Clear position indicator in the moulding



Pushing Performance

HARTING, Inc.
of
North America

Han-Yellock®

People | Power | Partnership

Spring 2010

Marking



- Thermotransfer labels
- Protected edges
- Marking abrasion proof
- Marking for covers and hoods





Pushing Performance

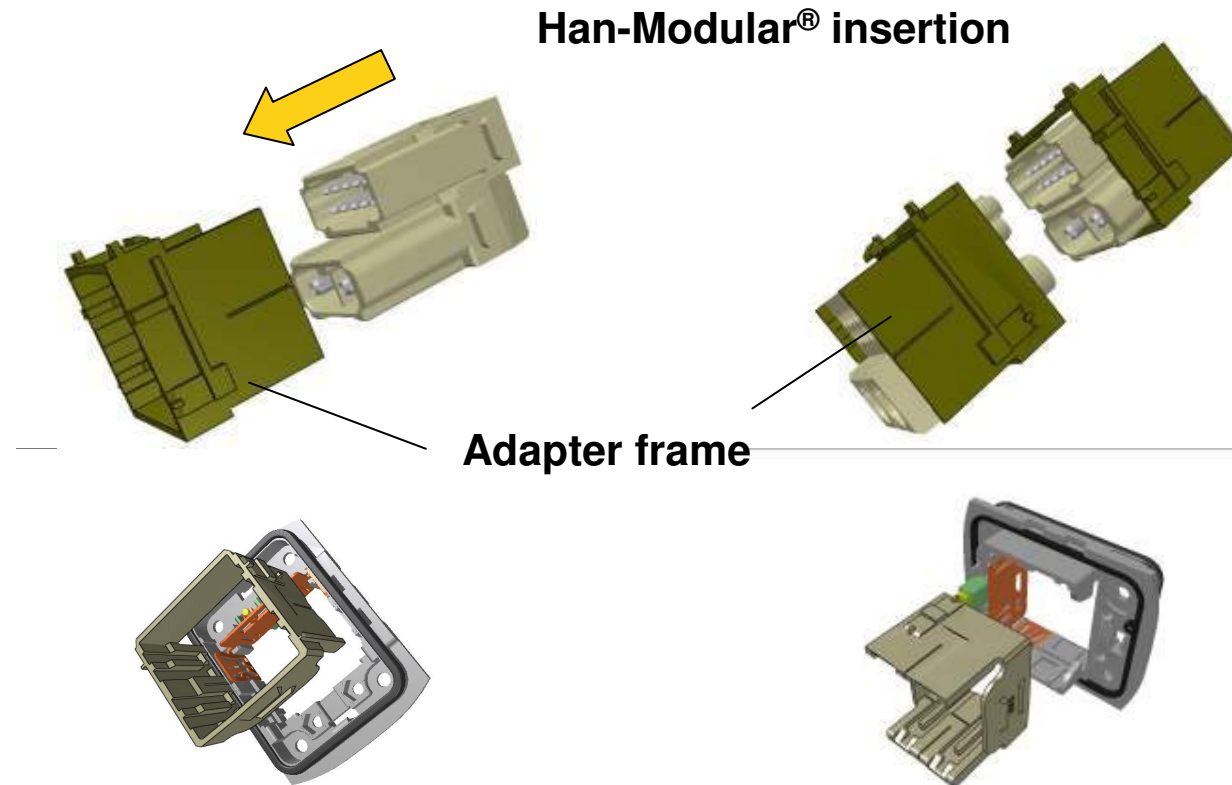
HARTING, Inc.
of
North America

Han-Yellock®

People | Power | Partnership

Spring 2010

Han-Yellock® with Han-Modular®



- Han-Modular® can be used together with the adapter frame for modules up to 8mm²
- The frame can be placed from the mating and from the termination side



Pushing Performance

HARTING, Inc.
of
North America

Han-Yellock®

People | Power | Partnership

Spring 2010

Monoblock Inserts



25 contacts in size 30

- Latching insert design
- Front- and back assembling of the insert
- Male and female contacts to achieve highest contact density





Pushing Performance

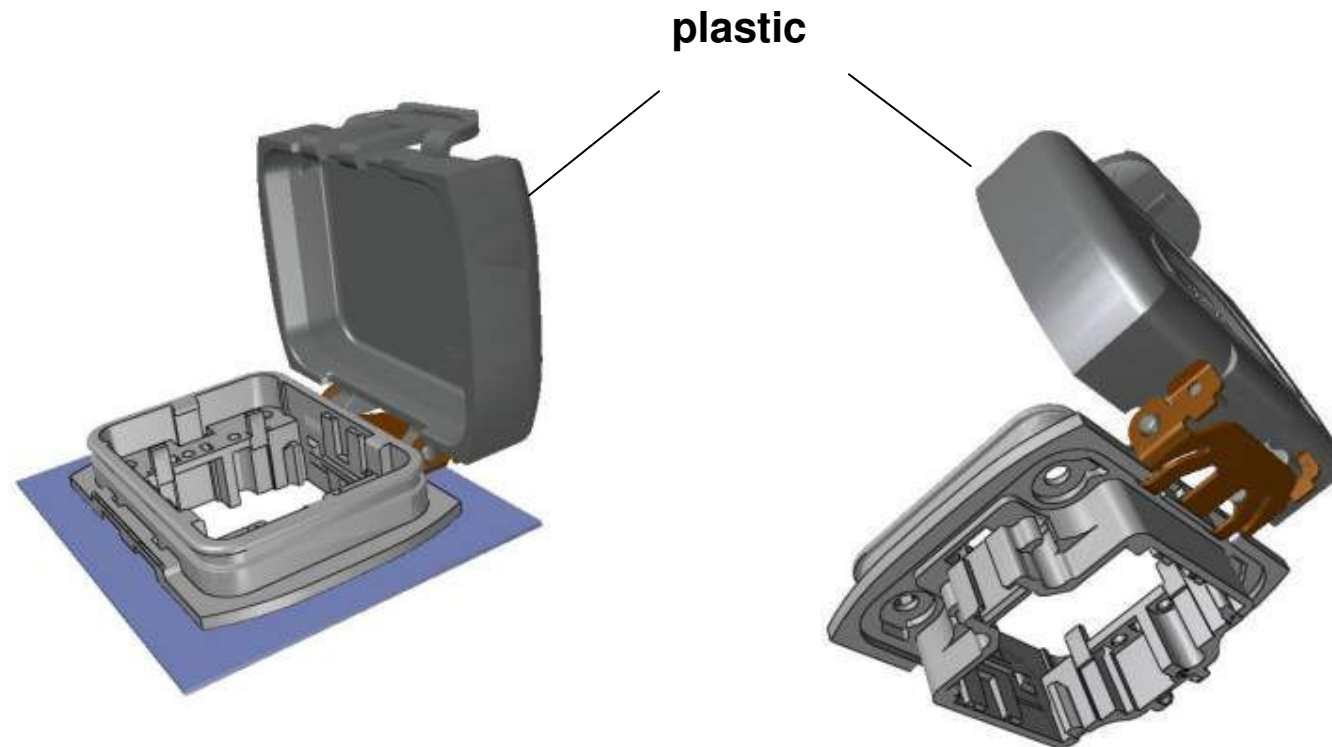
HARTING, Inc.
of
North America

Han-Yellock®

People | Power | Partnership

Spring 2010

Covers



- Hinged cover in retrofit style
- IP 67 protection cover
- Fixed opening position
- Plastic latch to lock/unlock the cover



Pushing Performance

HARTING, Inc.
of
North America

Han-Yellock®

People | Power | Partnership

Spring 2010

Han-Yellock® Advantages

Unique Features

- *Press button release*
- *Multiplying function*

Advantages

- *Faster assembly due to PE crimp contact*
- *Faster insert assembly due to missing fixing screws*
- *Faster locking due to missing locking levers*
- *Faster mounting due to Jack Nut mounting*
- *Increased safety due to high robustness*
- *Future proven design*



Pushing Performance

HARTING, Inc.
of
North America

Han-Yellock®

People | Power | Partnership

Spring 2010

Han-Yellock®

...the new Han® Series!



*Thank you for
your attention*



